



**Dear Trina:** My husband and I are both engineers with the Natural Resources Cartel, and we have two children, ages 9 and 11. A few days ago we received notice that we are to be transferred to the Lunar Mining Cartel and relocated to Luna.

My husband and I are, of course, happy to go wherever the WEC needs us, but I am a bit worried about the children. I'm concerned that they won't have a safe place to play, and that they might wander into an area where they might lose life support, or be exposed to radiation, or just get into unsafe mining equipment.

Mostly, however, I worry about the people they'll be around. I know that most of the lunar miners are criminals working off a sentence, and I'm concerned about exposing my kids to bad influences.

**Signed: Troubled Mom**

**Dear Troubled Mom:** Don't feel bad about worrying — it's a mother's job to worry about her children! In this case, however, I think your worries are misplaced. Your move to the moon could be the best thing that ever happened to your family! To take your concerns in order:

Rest assured that the WEC would never take chances with your children's safety — children are our most precious economic asset. Your children will have first-rate schools, and wonderfully fun low-g recreational areas to play in (as well as regular, healthy sports activities in centrifugal gyms, so they won't have any difficulty re-adjusting to Earth gravity when they return). All hazardous areas are sealed off except to workers, and security is guaranteed kid-proof. Your home in the lunar tunnels will be far safer from natural or man-made accidents than any downside city street.

Bad influences are another thing you don't have to worry about. It's true that 77% of lunar personnel are rehabilitatory conscripts, but don't forget that that means 23% of the people are just like you — honest working citizens with families. While the shaft gangs and general tech crews can be conscripts, remember that engineers, administrators, senior technicians and, of course, security personnel have to be citizen/partners of proven skill and reliability.

On Luna, the conscripts live in humane but rather austere dormitories, while the citizen/partners and their families live in their own, far more luxurious enclave near Cartel headquarters. The two populations are kept far apart, except on the job, and it's unlikely your kids will ever even meet a conscript, except perhaps on a school field trip.

**Trina Jenkins**

ADVERTISING

The WEC is now seeking techs and engineers with Lunar mining experience to build and expand WEC facilities on the outer planets. Right now there are openings on the Mars terraforming project, as well as limited berths available on Io, Europa and Ganymede, and soon the WEC will begin construction of low-g manufacturing facilities on Phobos and Deimos.

Rehabilitative conscripts are welcome to apply! If you've worked on the moon for at least six months, are healthy and have high productivity ratings, you can transfer your sentence to the outer planets! Get a new start out beyond the asteroid belt! We don't care where you've been — we're interested in where you're going.

If you're interested in reassignment to the outer planets, submit a request at the Trans-Jovian Operations office.

You know that Sparkle Juice has 40% more nutritive value than organic fruit juices. But did you know that recent research shows that the preservatives in Sparkle Juice can actually reduce cellular deterioration from incidental radiation contamination by as much as 3.7 percent?

Sparkle Juice: Not only does it keep you strong, it keeps you healthy!



PRODUCED AND PACKAGED BY THE SPARKLING BEVERAGE DIVISION, BEVERAGE CARTEL.

For more information about these and other stories, access keyword "NEWS" via any public datalink.



ANOTHER  
SERVICE OF  
THE WORLD  
ECONOMIC  
CONSORTIUM  
AND THE LUNAR  
MINING CARTEL

The Vigilance Platform was destroyed yesterday in a terrorist assault, Security Cartel officials announced today. At least 800 people lost their lives in the accident.

The power core of the Vigilance Platform exploded at 18:22, completely destroying the facility. The explosion is believed to have been the direct result of terrorist sabotage of the Platform's coolant system, causing the core to go super-critical and explode a few minutes later. The explosion produced a flash that could be clearly seen Earthside in broad daylight. The destruction was so complete, WEC investigators report, that no fragments of the platform large enough to survive re-entry into Earth's atmosphere remain.

At least 60 persons managed to reach the escape pods before the explosion. At this time it is believed that all survivors have been recovered, but search and rescue operations will continue for at least the rest of today. An exact count of the casualties will be delivered tomorrow and the names of the victims will be released upon notification of next of kin.

The so-called Resistance movement has already claimed responsibility for the attack. Investigators believe the explosion was most likely the work of a "deep cover" Resistance agent stationed on the platform. However, Security Cartel is also looking into the possibility that the attack may have been the work of a single terrorist or small demolition team that may have stowed away on an intraorbital cargo shuttle.

The Vigilance Platform attack came less than an hour after another reactor core meltdown left several thousand people dead or injured in Kiev. Security Cartel said it is investigating the possibility that the Kiev incident was also a terrorist act connected to the Vigilance Platform attack. At the moment, however, the Kiev explosion is considered most likely to have been the result of human error.

Orbital assembly of the Vigilance Platform began in 2194, and was to be completed this year. The Platform served as a manned monitoring facility for the Security Cartel, used for a variety of public information purposes, statistical analysis and public safety.

WEC Chairman Nathaniel Draygan announced today that work on a new Vigilance Platform will begin immediately, with a view to attaining full operational status as early as 2198. "The Vigilance Platform experiment was a success in absolutely every way," Chairman Draygan said. "We will not allow this cowardly act to invalidate the hard work of so many citizen/partners over so many years."

President Gauthier praised the sacrifice of the crewmen who lost their lives in the accident. "Rest assured that these brave men and women will be remembered among the great martyrs to progress whose blood makes possible the quality of life we enjoy today, and the advances we will make in the future."



EDITORIAL

A 0.3% drop in Di-Cor production over the last three months may look like an insignificant statistical glitch on paper. But with worldwide demand for Di-Cor going up every month, it's not a glitch, it's a crisis — and it's an intolerable threat to the survival of our home and our cartel.

We live in the most hostile environment man has ever conquered. Nature gives us nothing but solar energy — we must provide our own air, water, we must make our own climate, and we create the defenses that protect us from radiation contamination. We are doers — we are *producers* — and we are expected to do the job assigned to us, no arguments, no excuses. If the WEC needs more Di-Cor, we send them more Di-Cor, not fancy talk about "statistical glitches."

The survival of each one of us is dependent on everyone else. Life on the moon would be impossible if we Lunars did not live in a state of absolute trust with one another and, even more importantly, with the WEC, which supplies us with all the necessities for continued existence. We owe it to the WEC to *exceed* our production quotas, increase our efficiency and justify its continued investment in our welfare.

That's why I am always angered and horrified when I hear that some small group of malcontents is spreading so-called "republican" propaganda among the lunar workers. Such loose, unscientific talk endangers everyone on this colony. It erodes the life-giving bond of trust between the colony and the WEC, and between all of the individual lunar citizen/partners, which we must maintain at all costs if we are to continue to produce, survive and prosper on this new world.

A certain amount of such idle nonsense is to be expected — though never tolerated — among the conscripts. After all, it is their anti-social and unscientific behavior and attitudes that have brought them here in the first place. Unbelievably, however, there are a few who still enjoy the status of citizen/partner who also indulge in subversive chatter.

Among the conscripts, dissent can be anticipated, contained and suppressed, but when a citizen/partner abuses the freedoms granted by the WEC to spread propaganda, that individual becomes a clear and present danger to the productivity, security and even the survivability of this operation.

I urge every *true* citizen/partner to promptly report any such propaganda to their superiors. Idle speculations and pipe dreams are not worth your life or your hard-earned privileges.

— Judith Leach, Director, Lunar Mining Cartel

T  
O  
P  
P  
R  
E  
D  
I  
T  
I  
O  
N



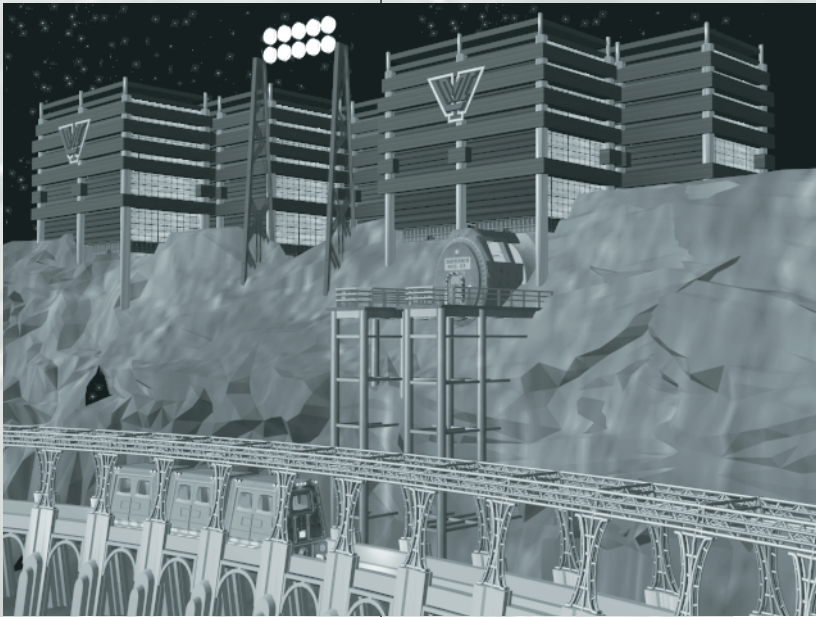
The Recreation Committee announced that the new Comprehensive Recreational Facility took a major step towards completion today, with the delivery of final specifications to Architectural Cartel offices on Earth.

The specifications were derived from Lunar workers' suggestions, according to Committee president Marko Viticek. The new facility's offerings will include a nine-hectare simulated beach, four iffie auditoriums, a child-safe low-g playground, 10 magnetized handball courts, a 200-pod VR center, food court and barter market, plus many more features, including recital halls, meeting rooms and multiple video lounges.

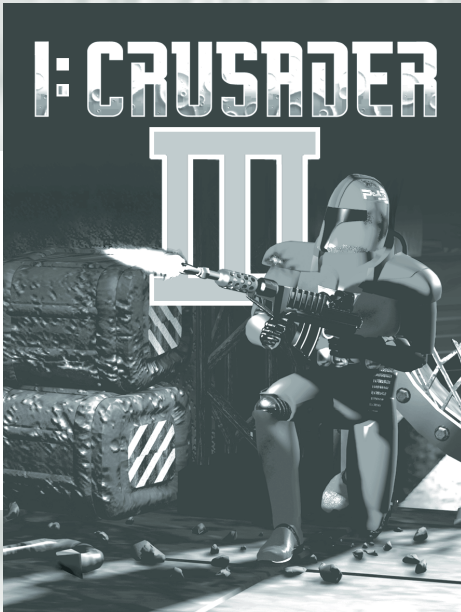
Finished blueprints could be back as soon as six months from now, after which the approval and modification process should take only a month or two more, Viticek said. After that, construction could begin "at any moment, just as soon as construction personnel can be released from other essential projects." The CRF will be located in a new cavern to be blasted out near the current administrative complex. Final completion dates have not been set, but Viticek promises the center will be finished "well before the turn of the century, and many facilities will be operating even earlier."

Viticek had harsh words for those who might feel that Rec Center construction is taking too long. "I've heard people say the center is 'tied up in red tape,' but that's nonsense," he said. "We've had funding and authorizations sewn up for almost four years now. What we're going through now isn't red tape, it's careful planning. You can't put up a real world-class recreation facility over night. The time this project is taking is just an example of how seriously the WEC takes this project — we're not going to get some hack job, we're going to get a facility that meets all the recreational needs of this colony for generations to come."

NEWS IN BRIEF



Until the Rec Center is completed, Viticek promised that the Recreation Committee will continue to provide for the leisure needs of the colony with their usual efficiency. Complimentary iffies will continue to be screened in the Colony Auditorium every 10 days. The action classic *I: Crusader III*, starring Colin Mann, has been held over due to popular demand, and will continue to be shown for at least the next three screenings.



ENTERTAINMENT

Adoring fans worldwide were crushed this week to hear that Caitlyn Odanga and Max Shee, "the Cinderella couple of the 22nd Century," were separating after 15 months of marriage.

Odanga, 27, is the most popular female singer of the last decade, while Shee, 47, has been the top leading man in romantic iffies since he starred in *The Associate Sub-Director's Daughter* in '74.

"I'd never, ever do anything to hurt Max," Odanga said. "He'll always be the one true love of my life. But it's just not yet time for me to tie myself down to one man."

"I also want to tell my fans, I'm really touched that they all care so much about my happiness," Odanga said. "I promise to do my very best to bring them happiness in return, through my music."

The singer says she'll be taking a two month retreat at the Himalayan Executive Leisure Center, "to sort out my feelings and try to find my spiritual center." When asked about her recent public appearances with dashing SRA Pilot Lyle Gershwin, Odanga said, "Lyle is a dear friend, and he's been a great help getting my head straight over the last few months. Why must people try to make our friendship more than what it is?" Gershwin confirmed that he would be accompanying Odanga to the Himalayas, "at least for a week or two, until she gets settled."

Shee, for his part, said, "I just have to care for Cait enough to let her go." Shee is currently in Antarctica, filming *Heart of Permafrost* at the Byrd Polar Complex. "For now, I'll just try to lose myself in my work."

Entertainment Cartel Director Bradley Himines said the divorce had already been approved by the Cartel. "When two people have brought as much joy to the citizen/partners of the WEC as Max and Caitlyn," Himines said, "you don't let paperwork stand in the way of their creative development, even when their needs are saddening. I'm sure I speak for every citizen/partner when I wish Max and Caitlyn only the very best."

Odanga and Shee's wedding and honeymoon special was the most-watched non-mandatory news event ever, with more than 11 billion viewers over the course of the 72-hour live event.

BUSINESS & TECHNOLOGY

The final section of the Prometheus Station life-support area will be pressurized today, and permanent-party crewmembers will begin moving in, R&D Cartel announced.



With this milestone, the Prometheus project officially enters its final phase. Limited operations are expected to begin immediately, with the station becoming fully staffed and operational within a year.

Prometheus Station is the most advanced and ambitious zero-g research and manufacturing facility ever constructed by the WEC. Facilities include nanotechnology labs and factories, crystal cultivation tanks, and a high-tech trans-stellar propulsion laboratory.

The station, located at the L2 point between Earth and Luna, will become the permanent home of up to 1200 scientists, technicians and their families.

The new module has a capacity for up to 400 persons at this time, with a final projected capacity of 250 (capacity will decrease as construction proceeds, due to the addition of amenities). Up to this point, inhabitants of Prometheus have mostly been construction crews, but today about 100 specialists will begin moving into the new area, to begin putting the station's research labs into operation. (Manufacturing areas won't be open for at least another month.)

"Living conditions are kind of sparse right now," Valerie Chou, a senior chemist moving into Prometheus today, told **Top Line**, "but we're all looking forward to watching the station shape up around us."

The habitation module opened today has been dubbed the Gauthier Sector by the construction crews, and a plaque bearing the names of the first occupants will be placed at the entrance to the module by the R&D Cartel.

New camouflage technologies based on nanotechnological morphing will be the key to defending WEC sites from terrorist assault, Security Cartel announced yesterday.

Major breakthroughs in anti-terrorist technology were announced at the fourth annual Site Security Seminar in Katmandu. The seminar is designed to let WEC site managers meet with representatives from Security, Mil-Ops and R&D Cartels to discuss ways to better protect WEC assets from risk due to anti-social elements.

At yesterday's keynote address, given by Security Cartel Chief Clifton Signoret, it was announced that the Security Cartel has developed, and is preparing to deploy, a whole line of security features based on radical new nanotech breakthroughs.

The new defenses will rely on morphing camouflage, a technique that will allow a weapon, sensor, barrier or even servomech to not only look like, but actually function as, an innocuous and common piece of office or factory equipment. Only in the event of an emergency will the new equipment reveal its defensive function, actually changing shape to become a weapon or other security measure.

Signoret said that the first morphing defensive measures have completed laboratory development, and are currently being deployed on a limited basis for field testing. The precise nature of the devices remains classified for the immediate future, but Signoret did demonstrate an example of the morphing technology — an operational personal datalink that can change shape to become a fully loaded handgun.

"Previously, the terrorist's greatest weapon was the element of surprise," Signoret said. "These devices will return that advantage to our side." He said that the measures were designed to supplement, not replace, current security protocols and technologies. "The existing technology will remain our main deterrent and first line of defense, but now the morphing tech will be there as a fallback measure, like the cavalry ready to come over the hill to the rescue, right when it's needed most."

More than 12,000 people attended this year's seminar — a jump of more than 100 percent over last year's attendance. "Terrorism's on the rise," Signoret told **Top Line**, "and the WEC is ready to meet the challenge. I applaud the managers attending this year's SSS for their commitment to the protection of vital WEC resources."

